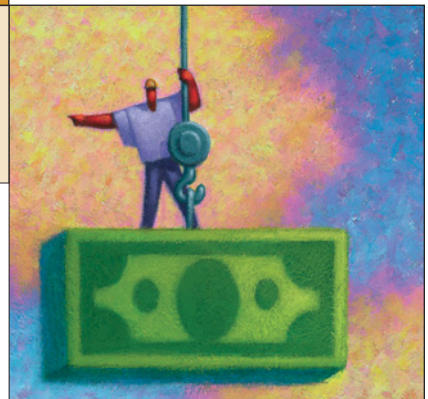


# FAIRFIELD COUNTY Business

## ECONOMIC PROFILE

### BUSINESS CLIMATE ►

Looking for a strong and diverse economy? Fairfield County has it, with a long history of manufacturing, agriculture and more recent additions of health care, bioscience, information technology, and professional-service companies.



### LABOR FORCE

70,700 (2004)

### Violet Pointe CEDA

Location: Village of Canal Winchester, Violet Township  
Available Acreage: 1,500  
Price Per Acre: **Varies**

### BUSINESS & INDUSTRIAL PARKS

#### Canal Pointe Commerce Center

Location: Howe Ind. Parkway,  
Canal Winchester  
Available Acreage: 50  
Price Per Acre: **\$65,000**

#### Canal Pointe Industry & Commerce Park

Location: Dove Parkway,  
Canal Winchester  
Available Acreage: 114  
Price Per Acre: **\$45,000-\$62,000**

#### East Side Industrial Park

Location: Commerce Street,  
Lancaster  
Available Acreage: 113  
Price Per Acre: **N/A**

#### Lancaster Industrial Park

Location: Campground Road,  
Lancaster  
Available Acreage: 8  
Price Per Acre: **\$42,000**

#### Rock Mill Industrial Park Phase I

Location: Campground Road,  
Lancaster  
Available Acreage: 40  
Price Per Acre: **\$30,000**

#### Rock Mill Industrial Park Phase II

Location: Mill Park Drive,  
Lancaster  
Available Acreage: 185  
Price Per Acre: **\$42,000**

#### Town Square Commerce Center

Location: Pickerington  
Available Acreage: 8  
Price Per Acre: **\$75,000**

### INDUSTRY

#### Employment by Industry

#### Avg. Annual Employment 2003

Private Sector	35,413
Manufacturing	5,260
Retail trade	5,159
Accommodation and food services	3,888
Health care and social assistance	2,966
Construction	2,228
Other services, except public administration	1,237
Administrative and waste services	2,293
Professional and technical services	1,031
Finance and insurance	900
Wholesale trade	656
Transportation and warehousing	420
Real estate and rental and leasing	472
Arts, entertainment and recreation	366
Information	356
Educational services	333
Utilities	180
Management of companies and enterprises	107
Other Services (except public administration)	1,237
State and local government	7,458
Local government	6,651
State government	807
Federal government	265

Source: Office of Strategic Research, Ohio Department of Development

## BUSINESS POINTS

Fairfield County sits between the main campuses of the biggest and best public universities in the state – Ohio University and Ohio State University.

The county is home to two of the state's fastest-growing cities (Pickerington and Lancaster), and is the third fastest-growing county in Ohio.

Fairfield County is within 15 minutes of a major cargo and international passenger airport and has its own public airport for business and recreational flights.

## TRANSPORTATION

### Airports

Fairfield County Airport  
(740) 654-7001

Port Columbus International Airport  
(614) 239-4000

Rickenbacker International Airport  
(614) 491-1401

### Rail

Norfolk Southern and CSX  
and Ohio Railroads

## FOR MORE INFORMATION

### Lancaster Economic Development

1424 Camp Ground Road  
Lancaster, OH 43130  
Phone: (740) 687-6670  
Fax: (740) 687-6672  
[www.ci.lancaster.oh.us/  
dept/econdev](http://www.ci.lancaster.oh.us/dept/econdev)

### Fairfield County Department of Economic Development

210 East Main St., Room 407  
Lancaster, OH 43130  
Phone: (740) 652-1546  
Fax: (740) 687-6048  
[businesscounty.com](http://businesscounty.com)

### Lancaster-Fairfield County Chamber of Commerce

109 N. Broad St.  
Lancaster, OH 43130-5450  
Phone: (740) 653-8251  
Fax: (740) 653-7074  
[lancoc.org](http://lancoc.org)

Sources: [co.fairfield.oh.us](http://co.fairfield.oh.us),  
[lancoc.org](http://lancoc.org), [businesscounty.com](http://businesscounty.com)